



Officials: Greg Nixon, Amy Bonner, Chris Beaver

Temple - 63

Record: 6-6

NO.	Name	Min	FG	3P	FT	Rebounds			Fouls		TP	AS	TO	ST	Blocks		+/-
			M-A	M-A	M-A	OR	DR	TOT	PF	FD					BS	BA	
14	Steve Settle	F 28:02	2-4	2-4	0-0	0	3	3	0	2	6	1	1	1	1	0	-17
33	Sam Hofman	F 38:58	4-12	4-9	0-1	2	7	9	2	2	12	2	1	0	0	0	-15
2	Jahlil White	G 27:01	2-4	0-1	0-0	2	1	3	2	1	4	1	2	1	0	0	-5
3	Hysier Miller	G 37:09	7-16	2-8	4-5	0	5	5	3	6	20	5	0	0	0	0	-15
34	Matteo Picarelli	G 22:01	2-10	1-7	0-0	0	1	1	1	1	5	0	0	1	0	0	-13
1	Zion Stanford	03:56	0-2	0-2	0-0	0	0	0	0	0	0	0	2	0	0	1	-1
4	Jordan Riley	20:28	2-7	0-2	1-2	0	3	3	2	3	5	1	0	0	1	0	-9
0	Quante Berry	04:05	0-0	0-0	0-0	0	1	1	0	0	0	0	1	0	0	0	-5
55	Shane Dezonie	18:20	3-7	3-5	2-2	2	1	3	1	1	11	1	1	0	0	1	5
Team						4	1	5			0		1				
<b>Totals</b>			22-62	12-38	7-10	10	23	33	11	16	63	11	9	3	2	2	-15

Shooting By Period		
1 <sup>st</sup> FG%	11-30	36.7%
3PT%	7-19	36.8%
FT%	2-3	66.7%
2 <sup>nd</sup> FG%	11-32	34.4%
3PT%	5-19	26.3%
FT%	5-7	71.4%
GMFG%	22-62	35.5%
3PT%	12-38	31.6%
FT%	7-10	70.0%

Dead Ball Rebounds: 0, 2

Technical Fouls: NONE

Old Dominion - 78

Record: 4-7

NO.	Name	Min	FG	3P	FT	Rebounds			Fouls		TP	AS	TO	ST	Blocks		+/-
			M-A	M-A	M-A	OR	DR	TOT	PF	FD					BS	BA	
11	Dani Pounds	F 10:48	2-2	0-0	0-0	0	1	1	4	0	4	0	1	0	0	0	1
15	R.J. Blakney	F 28:58	4-8	1-2	2-4	2	2	4	1	3	11	1	1	0	0	0	9
0	Vasean Allette	G 36:17	9-17	1-5	5-7	1	7	8	4	4	24	1	3	0	0	0	11
2	Chaunce Jenkins	G 31:23	6-12	3-5	2-4	2	5	7	2	2	17	5	1	2	1	0	22
10	Tyrone Williams	G 35:28	5-11	1-4	0-0	1	7	8	1	0	11	0	1	1	0	0	15
1	Jason Wade	29:12	2-3	0-0	0-0	2	6	8	3	1	4	3	2	0	1	0	14
55	Bryce Baker	15:34	1-5	1-5	0-0	1	0	1	0	0	3	1	0	0	0	1	6
3	Imo Essien	12:20	2-4	0-1	0-0	0	3	3	1	1	4	2	0	0	0	1	-3
Team						0	2	2			0		0				
<b>Totals</b>			31-62	7-22	9-15	9	33	42	16	11	78	13	9	3	2	2	15

Shooting By Period		
1 <sup>st</sup> FG%	14-31	45.2%
3PT%	3-11	27.3%
FT%	3-6	50%
2 <sup>nd</sup> FG%	17-31	54.8%
3PT%	4-11	36.4%
FT%	6-9	66.7%
GMFG%	31-62	50.0%
3PT%	7-22	31.8%
FT%	9-15	60.0%

Dead Ball Rebounds: 3, 0

Technical Fouls: NONE

	Temple	ODU
Biggest lead	4 (1 <sup>st</sup> 18:17)	17 (2 <sup>nd</sup> 0:48)
Best Scoring Run	6 (2 <sup>nd</sup> 13:36)	9 (2 <sup>nd</sup> 0:48)
Lead Changes	5	
Times Tied	2	
Time with Lead	09:41	29:02

Points from	Temple	ODU
Turnovers	4	2
Paint	18	44
Second Chance	8	6
Fast Breaks	0	2
Bench	16	11

	Period by Period Scoring		
	1st	2nd	TOT
Temple	31	32	63
ODU	34	44	78



**Period 1**

**Period Starters:**

<b>ODU</b>	0 Allette V	2 Jenkins C	10 Williams T	11 Pounds D	15 Blakney R
<b>Temple</b>	2 White J	3 Miller H	14 Settle S	33 Hofman S	34 Picarelli M

Game Time	ODU	Score	Diff	Temple
20:00	11 POUNDS D jumpball won			14 SETTLE S jumpball lost
19:42	15 BLAKNEY R 2pt FG in the paint, layup missed			
19:37				34 PICARELLI M defensive rebound (1)
19:18		<b>0-3</b>	<b>-3</b>	14 SETTLE S 3pt FG , jump shot made (3)
19:18				33 HOFMAN S assist (1)
18:52	11 POUNDS D 2pt FG outside the paint, turnaround jump shot made (2)	<b>2-3</b>	<b>-1</b>	
18:24				33 HOFMAN S 3pt FG , jump shot missed
18:19				2 WHITE J offensive rebound (1)
18:17		<b>2-6</b>	<b>-4</b>	34 PICARELLI M 3pt FG second chance, jump shot made (3)
18:17				14 SETTLE S assist (1)
17:53	0 ALLETTE V 2pt FG outside the paint, turnaround jump shot missed			
17:50				14 SETTLE S defensive rebound (1)
17:40				33 HOFMAN S 2pt FG in the paint, layup missed
17:37	11 POUNDS D defensive rebound (1)			
17:29	11 POUNDS D 2pt FG outside the paint, jump shot made (4)	<b>4-6</b>	<b>-2</b>	
17:29	2 JENKINS C assist (1)			
17:13	2 JENKINS C foul personal (1 - 1)			14 SETTLE S foul drawn (1)
16:56		<b>4-8</b>	<b>-4</b>	2 WHITE J 2pt FG in the paint, driving layup made (2)
16:37	0 ALLETTE V foul drawn (1)			34 PICARELLI M foul shooting (1 - 1)
16:37	0 ALLETTE V free throw 1 - 2 made (1)	<b>5-8</b>	<b>-3</b>	
16:37	0 ALLETTE V free throw 2 - 2 made (2)	<b>6-8</b>	<b>-2</b>	
16:22				34 PICARELLI M 2pt FG outside the paint, pull up jump shot missed
16:19	0 ALLETTE V defensive rebound (1)			
16:11	10 WILLIAMS T 3pt FG , jump shot missed			
16:09				3 MILLER H defensive rebound (1)
16:03		<b>6-10</b>	<b>-4</b>	3 MILLER H 2pt FG in the paint, layup made (2)
15:50	2 JENKINS C 2pt FG in the paint, driving layup made (2)	<b>8-10</b>	<b>-2</b>	
15:32				33 HOFMAN S 3pt FG , jump shot missed
15:29	0 ALLETTE V defensive rebound (2)			
15:17	10 WILLIAMS T 2pt FG in the paint, driving layup made (2)	<b>10-10</b>	<b>0</b>	
15:02		<b>10-13</b>	<b>-3</b>	3 MILLER H 3pt FG , jump shot made (5)
15:02				33 HOFMAN S assist (2)
14:41	11 POUNDS D foul offensive (1 - 2)			14 SETTLE S foul drawn (2)
14:41	11 POUNDS D turnover offensive (1)			
14:41	Timeout media			
14:41	10 WILLIAMS T substitution out			
14:41	11 POUNDS D substitution out			
14:41	1 WADE J substitution in			
14:41	55 BAKER B substitution in			
14:41				33 HOFMAN S substitution out



Official Basketball Play by Play - First Half  
**Temple at Old Dominion**  
 12/22/23 SimpliFi Arena at Stan Sheriff Center, Honolulu  
 2023-24 Men's Basketball

Game Time: 2:30 PM  
 Game Duration: 1:45  
 Attendance: 5,077

Officials: Greg Nixon, Amy Bonner, Chris Beaver

Game Time	ODU	Score	Diff	Temple
14:41				34 PICARELLI M substitution out
14:41				1 STANFORD Z substitution in
14:41				4 RILEY J substitution in
14:29				3 MILLER H 2pt FG from turnover in the paint, layup missed
14:28	defensive rebound (4)			
14:12	15 BLAKNEY R 2pt FG in the paint, layup missed			
14:12				defensive dead ball rebound (1)
14:12	jump ball situation			
13:41				1 STANFORD Z 3pt FG , jump shot blocked
13:41	1 WADE J block (1)			
13:39				offensive rebound (5)
13:39				turnover shot clock (1)
13:39				4 RILEY J substitution out
13:39				14 SETTLE S substitution out
13:39				0 BERRY Q substitution in
13:39				33 HOFMAN S substitution in
13:37	0 ALLETTE V 2pt FG from turnover in the paint, jump shot made (4)	12-13	-1	
13:37	15 BLAKNEY R assist (1)			
13:14				3 MILLER H substitution out
13:14				4 RILEY J substitution in
13:14	0 ALLETTE V foul personal (1 - 3)			4 RILEY J foul drawn (1)
13:14				0 BERRY Q turnover bad pass (1)
13:08	15 BLAKNEY R substitution out			
13:08	10 WILLIAMS T substitution in			
12:53	10 WILLIAMS T 2pt FG from turnover in the paint, layup missed			
12:51	10 WILLIAMS T offensive rebound (1)			
12:50	10 WILLIAMS T 2pt FG from turnover second chance in the paint, layup missed			
12:47				33 HOFMAN S defensive rebound (1)
12:38	10 WILLIAMS T steal (1)			1 STANFORD Z turnover lost ball (1)
12:33	2 JENKINS C 2pt FG from turnover in the paint, layup missed			
12:30	2 JENKINS C offensive rebound (1)			
12:28	0 ALLETTE V 3pt FG from turnover second chance, jump shot missed			
12:26				4 RILEY J defensive rebound (1)
12:13				1 STANFORD Z 3pt FG , jump shot missed
12:10	1 WADE J defensive rebound (1)			
11:52	2 JENKINS C 3pt FG , jump shot missed			
11:50				0 BERRY Q defensive rebound (1)
11:31				Timeout 30 Sec
11:31	Timeout media			
11:31	0 ALLETTE V substitution out			
11:31	3 ESSIEN I substitution in			
11:31				1 STANFORD Z substitution out
11:31				2 WHITE J substitution out
11:31				3 MILLER H substitution in
11:31				14 SETTLE S substitution in
11:21				3 MILLER H 3pt FG , jump shot missed



Official Basketball Play by Play - First Half  
**Temple at Old Dominion**  
 12/22/23 SimpliFi Arena at Stan Sheriff Center, Honolulu  
 2023-24 Men's Basketball

Game Time: 2:30 PM  
 Game Duration: 1:45  
 Attendance: 5,077

Officials: Greg Nixon, Amy Bonner, Chris Beaver

Game Time	ODU	Score	Diff	Temple
11:17				offensive rebound (9)
11:17				0 BERRY Q substitution out
11:17				34 PICARELLI M substitution in
10:59				33 HOFMAN S 2pt FG second chance in the paint, turnaround jump shot missed
10:55	3 ESSIEN I defensive rebound (1)			
10:52	3 ESSIEN I 2pt FG in the paint, pull up jump shot made (2)	<b>14-13</b>	<b>1</b>	
10:26				4 RILEY J 3pt FG , jump shot missed
10:22	3 ESSIEN I defensive rebound (2)			
10:18	10 WILLIAMS T 2pt FG fast break in the paint, driving layup made (4)	<b>16-13</b>	<b>3</b>	
10:18	3 ESSIEN I assist (1)			
09:57				14 SETTLE S turnover bad pass (1)
09:57				4 RILEY J substitution out
09:57				55 DEZONIE S substitution in
09:57	2 JENKINS C substitution out			
09:57	0 ALLETTE V substitution in			
09:39	55 BAKER B 3pt FG from turnover, jump shot missed			
09:36				3 MILLER H defensive rebound (2)
09:26				14 SETTLE S 3pt FG , jump shot missed
09:23	0 ALLETTE V defensive rebound (3)			
09:17	0 ALLETTE V turnover bad pass (1)			34 PICARELLI M steal (1)
09:00		<b>16-15</b>	<b>1</b>	34 PICARELLI M 2pt FG from turnover outside the paint, pull up jump shot made (5)
08:36	0 ALLETTE V 2pt FG in the paint, jump shot made (6)	<b>18-15</b>	<b>3</b>	
08:18				33 HOFMAN S 3pt FG , jump shot missed
08:16	0 ALLETTE V defensive rebound (4)			
08:03	0 ALLETTE V 3pt FG , jump shot missed			
07:59				33 HOFMAN S defensive rebound (2)
07:54	3 ESSIEN I foul personal (1 - 4)			3 MILLER H foul drawn (1)
07:54	Timeout media			
07:54	1 WADE J substitution out			
07:54	55 BAKER B substitution out			
07:54	11 POUNDS D substitution in			
07:54	15 BLAKNEY R substitution in			
07:54				14 SETTLE S substitution out
07:54				2 WHITE J substitution in
07:53				34 PICARELLI M 2pt FG outside the paint, jump shot missed
07:50	defensive rebound (12)			
07:31	0 ALLETTE V turnover lost ball (2)			2 WHITE J steal (1)
07:19				55 DEZONIE S 3pt FG from turnover, jump shot missed
07:16	0 ALLETTE V defensive rebound (5)			
07:00	15 BLAKNEY R 2pt FG in the paint, floating jump shot missed			
06:56				55 DEZONIE S defensive rebound (1)
06:51	15 BLAKNEY R foul shooting (1 - 5)			55 DEZONIE S foul drawn (1)
06:51		<b>18-16</b>	<b>2</b>	55 DEZONIE S free throw 1 - 2 made (1)
06:51	3 ESSIEN I substitution out			
06:51	2 JENKINS C substitution in			
06:51		<b>18-17</b>	<b>1</b>	55 DEZONIE S free throw 2 - 2 made (2)



Official Basketball Play by Play - First Half  
**Temple at Old Dominion**  
 12/22/23 SimpliFi Arena at Stan Sheriff Center, Honolulu  
 2023-24 Men's Basketball

Game Time: 2:30 PM  
 Game Duration: 1:45  
 Attendance: 5,077

Officials: Greg Nixon, Amy Bonner, Chris Beaver

Game Time	ODU	Score	Diff	Temple
06:28	0 ALLETTE V 2pt FG in the paint, floating jump shot made (8)	20-17	3	
06:13	11 POUNDS D foul personal (2 - 6)			2 WHITE J foul drawn (1)
06:13	11 POUNDS D substitution out			
06:13	1 WADE J substitution in			
06:04		20-20	0	55 DEZONIE S 3pt FG , jump shot made (5)
06:04				3 MILLER H assist (1)
05:46	2 JENKINS C 3pt FG , jump shot missed			
05:44	15 BLAKNEY R offensive rebound (1)			
05:44	15 BLAKNEY R foul drawn (1)			55 DEZONIE S foul shooting (1 - 2)
05:44	15 BLAKNEY R free throw 1 - 2 missed			
05:44	offensive dead ball rebound (1)			
05:44	15 BLAKNEY R free throw 2 - 2 made (1)	21-20	1	
05:34		21-23	-2	3 MILLER H 3pt FG , jump shot made (8)
05:10	0 ALLETTE V 3pt FG , jump shot made (11)	24-23	1	
05:10	1 WADE J assist (1)			
04:51		24-25	-1	2 WHITE J 2pt FG in the paint, layup made (4)
04:44	10 WILLIAMS T 3pt FG , jump shot missed			
04:36	15 BLAKNEY R offensive rebound (2)			
04:32	0 ALLETTE V foul drawn (2)			33 HOFMAN S foul shooting (1 - 3)
04:32	0 ALLETTE V free throw 1 - 2 missed			
04:32	offensive dead ball rebound (2)			
04:32				55 DEZONIE S substitution out
04:32				4 RILEY J substitution in
04:32	0 ALLETTE V free throw 2 - 2 missed			
04:31				4 RILEY J defensive rebound (2)
04:18				34 PICARELLI M 3pt FG , jump shot missed
04:16				offensive rebound (14)
04:04				34 PICARELLI M 3pt FG second chance, jump shot missed
04:00	10 WILLIAMS T defensive rebound (2)			
03:45	2 JENKINS C 2pt FG in the paint, driving layup made (4)	26-25	1	
03:30				4 RILEY J 2pt FG outside the paint, pull up jump shot missed
03:27	15 BLAKNEY R defensive rebound (3)			
03:17	2 JENKINS C 3pt FG , jump shot made (7)	29-25	4	
03:17	1 WADE J assist (2)			
02:58	1 WADE J foul drawn (1)			2 WHITE J foul offensive (1 - 4)
02:58				2 WHITE J turnover offensive (1)
02:58	Timeout media			
02:58				34 PICARELLI M substitution out
02:58				14 SETTLE S substitution in
02:39	2 JENKINS C 2pt FG from turnover in the paint, layup missed			
02:37	2 JENKINS C offensive rebound (2)			
02:31	10 WILLIAMS T 2pt FG from turnover second chance in the paint, layup missed			
02:31				defensive dead ball rebound (2)
02:31	2 JENKINS C foul personal (2 - 7)			4 RILEY J foul drawn (2)
02:31				4 RILEY J 1&1 free throw 1 missed
02:30	2 JENKINS C defensive rebound (3)			



Official Basketball PlaybyPlay - First Half  
**Temple at Old Dominion**  
 12/22/23 SimpliFi Arena at Stan Sheriff Center, Honolulu  
 2023-24 Men's Basketball

**Game Time:** 2:30 PM  
**Game Duration:** 1:45  
**Attendance:** 5,077

**Officials:** Greg Nixon, Amy Bonner, Chris Beaver

Game Time	ODU	Score	Diff	Temple
02:10	15 BLAKNEY R turnover travel (1)			
02:10	2 JENKINS C substitution out			
02:10	3 ESSIEN I substitution in			
01:54				4 RILEY J 3pt FG from turnover, jump shot missed
01:50	0 ALLETTE V defensive rebound (6)			
01:39	1 WADE J 2pt FG in the paint, layup made (2)	<b>31-25</b>	<b>6</b>	
01:27		<b>31-28</b>	<b>3</b>	33 HOFMAN S 3pt FG , jump shot made (3)
01:27				3 MILLER H assist (2)
01:06	1 WADE J turnover travel (1)			
00:57				3 MILLER H 2pt FG from turnover in the paint, layup missed
00:54	0 ALLETTE V defensive rebound (7)			
00:45	15 BLAKNEY R 3pt FG , jump shot made (4)	<b>34-28</b>	<b>6</b>	
00:45	3 ESSIEN I assist (2)			
00:34		<b>34-31</b>	<b>3</b>	14 SETTLE S 3pt FG , jump shot made (6)
00:34				2 WHITE J assist (1)
00:02	3 ESSIEN I 3pt FG , jump shot missed			
00:00				14 SETTLE S defensive rebound (2)
<b>END OF PERIOD</b>				
<b>ODU 34-31 Temple</b>				



Officials: Greg Nixon, Amy Bonner, Chris Beaver

Temple - 31

NO.	Name	Min	FG		3P		FT		Rebounds			Fouls		TP	AS	TO	ST	Blocks		+/-
			M-A	M-A	M-A	M-A	OR	DR	TOT	PF	FD	BS	BA							
14	Steve Settle	F 12:56	2-3	2-3	0-0	0	2	2	0	2	6	1	1	0	0	0	0	0	0	0
33	Sam Hofman	F 18:58	1-6	1-4	0-0	0	2	2	1	0	3	2	0	0	0	0	0	0	0	-3
2	Jahlil White	G 16:23	2-2	0-0	0-0	1	0	1	1	1	4	1	1	1	0	0	1	0	0	1
3	Hysier Miller	G 18:17	3-6	2-3	0-0	0	2	2	0	1	8	2	0	0	0	0	0	0	0	-3
34	Matteo Picarelli	G 13:38	2-6	1-3	0-0	0	1	1	1	0	5	0	0	1	0	0	1	0	0	-2
1	Zion Stanford	03:10	0-2	0-2	0-0	0	0	0	0	0	0	0	1	0	0	0	1	0	0	-2
4	Jordan Riley	08:51	0-3	0-2	0-1	0	2	2	0	2	0	0	0	0	0	0	0	0	0	-8
0	Quante Berry	02:22	0-0	0-0	0-0	0	1	1	0	0	0	0	1	0	0	0	0	0	0	-2
55	Shane Dezonie	05:25	1-2	1-2	2-2	0	1	1	1	1	5	0	0	0	0	0	0	0	0	4
Team									3	0	3		0		1					
<b>Totals</b>			11-30	7-19	2-3	4	11	15	4	7	31	6	5	2	0	1	0	1	0	-3

Shooting By Period		
1st FG%	11-30	36.7%
3PT%	7-19	36.8%
FT%	2-3	66.7%
GMFG%	11-30	36.7%
3PT%	7-19	36.8%
FT%	2-3	66.7%

Dead Ball Rebounds: 0, 2

Technical Fouls: NONE

Old Dominion - 34

NO.	Name	Min	FG		3P		FT		Rebounds			Fouls		TP	AS	TO	ST	Blocks		+/-	
			M-A	M-A	M-A	M-A	OR	DR	TOT	PF	FD	BS	BA								
11	Dani Pounds	F 07:00	2-2	0-0	0-0	0	1	1	2	0	4	0	1	0	0	0	0	0	0	0	-3
15	R.J. Blakney	F 14:46	1-4	1-1	1-2	2	1	3	1	1	4	1	1	0	0	0	0	0	0	0	-1
0	Vasean Allette	G 18:26	4-7	1-3	2-4	0	7	7	1	2	11	0	2	0	0	0	0	0	0	-1	
2	Chaunce Jenkins	G 14:44	3-7	1-3	0-0	2	1	3	2	0	7	1	0	0	0	0	0	0	0	5	
10	Tyrone Williams	G 18:27	2-7	0-2	0-0	1	1	2	0	0	4	0	0	1	0	0	1	0	0	1	
1	Jason Wade	13:00	1-1	0-0	0-0	0	1	1	0	1	2	2	1	0	1	0	1	0	0	6	
55	Bryce Baker	06:47	0-1	0-1	0-0	0	0	0	0	0	0	0	0	0	0	0	0	0	0	6	
3	Imo Essien	06:50	1-2	0-1	0-0	0	2	2	1	0	2	2	0	0	0	0	0	0	0	2	
Team									0	2	2		0		0						
<b>Totals</b>			14-31	3-11	3-6	5	16	21	7	4	34	6	5	1	1	1	0	0	0	3	

Shooting By Period		
1st FG%	14-31	45.2%
3PT%	3-11	27.3%
FT%	3-6	50%
GMFG%	14-31	45.2%
3PT%	3-11	27.3%
FT%	3-6	50.0%

Dead Ball Rebounds: 2, 0

Technical Fouls: NONE

	Temple	ODU
Biggest lead	4 (1 <sup>st</sup> 18:17)	6 (1 <sup>st</sup> 1:39)
Best Scoring Run	3 (1 <sup>st</sup> 19:18)	7 (1 <sup>st</sup> 1:39)
Lead Changes	5	
Times Tied	2	
Time with Lead	09:41	09:02

	Temple	ODU
Points from		
Turnovers	2	2
Paint	6	18
Second Chance	3	1
Fast Breaks	0	2
Bench	5	4

	Period by Period Scoring		
	1st	2nd	TOT
Temple	31	32	63
ODU	34	44	78



**Period 2**

**Period Starters:**

<b>ODU</b>	0 Allette V	2 Jenkins C	10 Williams T	11 Pounds D	15 Blakney R
<b>Temple</b>	2 White J	3 Miller H	14 Settle S	33 Hofman S	34 Picarelli M

Game Time	ODU	Score	Diff	Temple
20:00	1 WADE J substitution out			
20:00	3 ESSIEN I substitution out			
20:00	2 JENKINS C substitution in			
20:00	11 POUNDS D substitution in			
20:00				4 RILEY J substitution out
20:00				34 PICARELLI M substitution in
19:50	15 BLAKNEY R 2pt FG in the paint, layup made (6)	<b>36-31</b>	<b>5</b>	
19:50	2 JENKINS C assist (2)			
19:35				34 PICARELLI M 3pt FG , jump shot missed
19:32	10 WILLIAMS T defensive rebound (3)			
19:13	0 ALLETTE V 2pt FG in the paint, pull up jump shot made (13)	<b>38-31</b>	<b>7</b>	
19:00	2 JENKINS C steal (1)			2 WHITE J turnover bad pass (2)
18:56	2 JENKINS C turnover bad pass (1)			
18:47	11 POUNDS D foul personal (3 - 1)			3 MILLER H foul drawn (2)
18:47	11 POUNDS D substitution out			
18:47	1 WADE J substitution in			
18:40	10 WILLIAMS T foul personal (1 - 2)			3 MILLER H foul drawn (3)
18:37	0 ALLETTE V foul personal (2 - 3)			34 PICARELLI M foul drawn (1)
18:30				3 MILLER H 3pt FG from turnover, jump shot missed
18:30	2 JENKINS C defensive rebound (4)			
18:10	0 ALLETTE V turnover lost ball (3)			
18:03		<b>38-33</b>	<b>5</b>	3 MILLER H 2pt FG from turnover in the paint, layup made (10)
17:40	2 JENKINS C 3pt FG , jump shot made (10)	<b>41-33</b>	<b>8</b>	
17:23				2 WHITE J 3pt FG , jump shot missed
17:20	1 WADE J defensive rebound (2)			
17:14	2 JENKINS C 2pt FG in the paint, layup missed			
17:11	0 ALLETTE V offensive rebound (8)			
17:11	0 ALLETTE V 2pt FG second chance in the paint, layup made (15)	<b>43-33</b>	<b>10</b>	
17:11	0 ALLETTE V foul drawn (3)			3 MILLER H foul shooting (1 - 1)
17:11				2 WHITE J substitution out
17:11				4 RILEY J substitution in
17:11				34 PICARELLI M substitution out
17:11				55 DEZONIE S substitution in
17:11	0 ALLETTE V free throw 1 - 1 made (16)	<b>44-33</b>	<b>11</b>	
17:01				3 MILLER H 3pt FG , jump shot missed
16:58	1 WADE J defensive rebound (3)			
16:55	1 WADE J turnover bad pass (2)			
16:40				55 DEZONIE S 3pt FG from turnover, jump shot missed
16:32	1 WADE J defensive rebound (4)			
16:25	2 JENKINS C foul drawn (1)			4 RILEY J foul shooting (1 - 2)
16:25	2 JENKINS C free throw 1 - 2 missed			



Official Basketball Play by Play - Second Half  
**Temple at Old Dominion**  
 12/22/23 SimpliFi Arena at Stan Sheriff Center, Honolulu  
 2023-24 Men's Basketball

Game Time: 2:30 PM  
 Game Duration: 1:45  
 Attendance: 5,077

Officials: Greg Nixon, Amy Bonner, Chris Beaver

Game Time	ODU	Score	Diff	Temple
16:25	offensive dead ball rebound (3)			
16:25	2 JENKINS C free throw 2 - 2 missed			
16:24				33 HOFMAN S defensive rebound (3)
15:59	Timeout media			
15:59	2 JENKINS C substitution out			
15:59	3 ESSIEN I substitution in			
15:59				14 SETTLE S substitution out
15:59				1 STANFORD Z substitution in
15:56		<b>44-36</b>	<b>8</b>	33 HOFMAN S 3pt FG , jump shot made (6)
15:56				3 MILLER H assist (3)
15:31	0 ALLETTE V foul drawn (4)			3 MILLER H foul shooting (2 - 3)
15:31	0 ALLETTE V free throw 1 - 2 made (17)	<b>45-36</b>	<b>9</b>	
15:31	0 ALLETTE V free throw 2 - 2 made (18)	<b>46-36</b>	<b>10</b>	
15:19				55 DEZONIE S 2pt FG in the paint, driving layup missed
15:16				33 HOFMAN S offensive rebound (4)
15:13				1 STANFORD Z turnover travel (2)
15:13				1 STANFORD Z substitution out
15:13				2 WHITE J substitution in
14:53	0 ALLETTE V 2pt FG from turnover in the paint, driving layup missed			
14:48	1 WADE J offensive rebound (5)			
14:46	15 BLAKNEY R 3pt FG from turnover second chance, jump shot missed			
14:44				33 HOFMAN S defensive rebound (5)
14:29		<b>46-38</b>	<b>8</b>	4 RILEY J 2pt FG in the paint, driving layup made (2)
14:29	1 WADE J foul shooting (1 - 4)			4 RILEY J foul drawn (3)
14:29	10 WILLIAMS T substitution out			
14:29	55 BAKER B substitution in			
14:29		<b>46-39</b>	<b>7</b>	4 RILEY J free throw 1 - 1 made (3)
14:14	1 WADE J 2pt FG in the paint, layup missed			
14:10	1 WADE J offensive rebound (6)			
14:04	0 ALLETTE V 3pt FG second chance, jump shot missed			
14:01				3 MILLER H defensive rebound (3)
13:36		<b>46-42</b>	<b>4</b>	55 DEZONIE S 3pt FG , jump shot made (8)
13:36				4 RILEY J assist (1)
13:15	3 ESSIEN I 2pt FG in the paint, pull up jump shot made (4)	<b>48-42</b>	<b>6</b>	
12:59		<b>48-44</b>	<b>4</b>	3 MILLER H 2pt FG in the paint, driving layup made (12)
12:38	15 BLAKNEY R 2pt FG in the paint, layup made (8)	<b>50-44</b>	<b>6</b>	
12:38	1 WADE J assist (3)			
12:38	15 BLAKNEY R foul drawn (2)			2 WHITE J foul shooting (2 - 4)
12:38	0 ALLETTE V substitution out			
12:38	1 WADE J substitution out			
12:38	2 JENKINS C substitution in			
12:38	11 POUNDS D substitution in			
12:38	15 BLAKNEY R free throw 1 - 1 missed			
12:37				33 HOFMAN S defensive rebound (6)
12:25	2 JENKINS C steal (2)			55 DEZONIE S turnover bad pass (1)
12:21	2 JENKINS C 2pt FG from turnover in the paint, driving layup missed			
12:16				2 WHITE J defensive rebound (2)



Official Basketball Play by Play - Second Half  
**Temple at Old Dominion**  
 12/22/23 SimpliFi Arena at Stan Sheriff Center, Honolulu  
 2023-24 Men's Basketball

**Game Time:** 2:30 PM  
**Game Duration:** 1:45  
**Attendance:** 5,077

**Officials:** Greg Nixon, Amy Bonner, Chris Beaver

Game Time	ODU	Score	Diff	Temple
12:08		<b>50-47</b>	<b>3</b>	55 DEZONIE S 3pt FG , jump shot made (11)
12:08				3 MILLER H assist (4)
11:49	55 BAKER B 3pt FG , jump shot made (3)	<b>53-47</b>	<b>6</b>	
11:49	2 JENKINS C assist (3)			
11:30	Timeout media			
11:30	15 BLAKNEY R substitution out			
11:30	10 WILLIAMS T substitution in			
11:30				2 WHITE J substitution out
11:30				4 RILEY J substitution out
11:30				14 SETTLE S substitution in
11:30				34 PICARELLI M substitution in
11:13				34 PICARELLI M 3pt FG , jump shot missed
11:10	3 ESSIEN I defensive rebound (3)			
11:03	3 ESSIEN I 2pt FG in the paint, layup blocked			
11:03				14 SETTLE S block (1)
11:00				33 HOFMAN S defensive rebound (7)
10:50				3 MILLER H 3pt FG , jump shot missed
10:47	2 JENKINS C defensive rebound (5)			
10:34	10 WILLIAMS T turnover bad pass (1)			14 SETTLE S steal (1)
10:29	3 ESSIEN I foul drawn (1)			33 HOFMAN S foul offensive (2 - 5)
10:29				33 HOFMAN S turnover offensive (1)
10:29	3 ESSIEN I substitution out			
10:29	0 ALLETTE V substitution in			
10:15	0 ALLETTE V 2pt FG from turnover in the paint, layup missed			
10:15				defensive rebound (23)
10:03	11 POUNDS D foul personal (4 - 5)			33 HOFMAN S foul drawn (1)
10:03	11 POUNDS D substitution out			
10:03	1 WADE J substitution in			
09:51				33 HOFMAN S 3pt FG , jump shot missed
09:48				55 DEZONIE S offensive rebound (2)
09:48				55 DEZONIE S 2pt FG second chance in the paint, layup blocked
09:48	2 JENKINS C block (1)			
09:45	2 JENKINS C defensive rebound (6)			
09:32	10 WILLIAMS T 3pt FG , jump shot made (7)	<b>56-47</b>	<b>9</b>	
09:32	2 JENKINS C assist (4)			
09:08	1 WADE J foul shooting (2 - 6)			3 MILLER H foul drawn (4)
09:08		<b>56-48</b>	<b>8</b>	3 MILLER H free throw 1 - 2 made (13)
09:08				34 PICARELLI M substitution out
09:08				4 RILEY J substitution in
09:08				3 MILLER H free throw 2 - 2 missed
09:07	10 WILLIAMS T defensive rebound (4)			
09:02	55 BAKER B 3pt FG , jump shot blocked			
09:02				4 RILEY J block (1)
08:58	55 BAKER B offensive rebound (1)			
08:57	10 WILLIAMS T 2pt FG second chance in the paint, dunk, made (9)	<b>58-48</b>	<b>10</b>	
08:57	55 BAKER B assist (1)			
08:36		<b>58-50</b>	<b>8</b>	3 MILLER H 2pt FG in the paint, driving layup made (15)
08:36	1 WADE J foul shooting (3 - 7)			3 MILLER H foul drawn (5)



Official Basketball Play by Play - Second Half  
**Temple at Old Dominion**  
 12/22/23 SimpliFi Arena at Stan Sheriff Center, Honolulu  
 2023-24 Men's Basketball

**Game Time:** 2:30 PM  
**Game Duration:** 1:45  
**Attendance:** 5,077

**Officials:** Greg Nixon, Amy Bonner, Chris Beaver

Game Time	ODU	Score	Diff	Temple
08:36		<b>58-51</b>	<b>7</b>	3 MILLER H free throw 1 - 1 made (16)
08:36				3 MILLER H substitution out
08:36				2 WHITE J substitution in
08:23	55 BAKER B 3pt FG , jump shot missed			
08:20				4 RILEY J defensive rebound (3)
08:06		<b>58-53</b>	<b>5</b>	4 RILEY J 2pt FG in the paint, floating jump shot made (5)
07:51	2 JENKINS C 2pt FG in the paint, driving layup made (12)	<b>60-53</b>	<b>7</b>	
07:30				33 HOFMAN S 2pt FG in the paint, hook shot missed
07:27				2 WHITE J offensive rebound (3)
07:28	Timeout media			
07:28				55 DEZONIE S substitution out
07:28				3 MILLER H substitution in
07:12				4 RILEY J 2pt FG second chance outside the paint, turnaround jump shot missed
07:07	1 WADE J defensive rebound (7)			
06:56	55 BAKER B 3pt FG , jump shot missed			
06:52				14 SETTLE S defensive rebound (3)
06:42		<b>60-56</b>	<b>4</b>	33 HOFMAN S 3pt FG , jump shot made (9)
06:42				3 MILLER H assist (5)
06:22	1 WADE J 2pt FG in the paint, driving layup made (4)	<b>62-56</b>	<b>6</b>	
05:57				3 MILLER H 3pt FG , jump shot missed
05:53	10 WILLIAMS T defensive rebound (5)			
05:46	0 ALLETTE V 2pt FG in the paint, driving layup made (20)	<b>64-56</b>	<b>8</b>	
05:42	55 BAKER B substitution out			
05:42	15 BLAKNEY R substitution in			
05:29				2 WHITE J 2pt FG in the paint, jump shot missed
05:26	15 BLAKNEY R defensive rebound (4)			
05:05	10 WILLIAMS T 2pt FG in the paint, layup made (11)	<b>66-56</b>	<b>10</b>	
04:56				14 SETTLE S 3pt FG , jump shot missed
04:55				offensive rebound (28)
04:55				4 RILEY J substitution out
04:55				34 PICARELLI M substitution in
04:55				55 DEZONIE S substitution in
04:55				14 SETTLE S substitution out
04:44	0 ALLETTE V foul shooting (3 - 8)			3 MILLER H foul drawn (6)
04:44		<b>66-57</b>	<b>9</b>	3 MILLER H free throw 1 - 2 made (17)
04:44		<b>66-58</b>	<b>8</b>	3 MILLER H free throw 2 - 2 made (18)
04:30	15 BLAKNEY R 2pt FG in the paint, dunk, made (10)	<b>68-58</b>	<b>10</b>	
04:30	2 JENKINS C assist (5)			
04:30	15 BLAKNEY R foul drawn (3)			3 MILLER H foul shooting (3 - 6)
04:30				2 WHITE J substitution out
04:30				14 SETTLE S substitution in
04:30	15 BLAKNEY R free throw 1 - 1 made (11)	<b>69-58</b>	<b>11</b>	
04:18				34 PICARELLI M 3pt FG , jump shot missed
04:14				33 HOFMAN S offensive rebound (8)
04:09	Timeout 30 Sec			
03:55				33 HOFMAN S 3pt FG second chance, jump shot missed
03:50				55 DEZONIE S offensive rebound (3)
03:46		<b>69-61</b>	<b>8</b>	33 HOFMAN S 3pt FG second chance, jump shot made (12)



Official Basketball Play by Play - Second Half  
**Temple at Old Dominion**  
 12/22/23 SimpliFi Arena at Stan Sheriff Center, Honolulu  
 2023-24 Men's Basketball

**Game Time:** 2:30 PM  
**Game Duration:** 1:45  
**Attendance:** 5,077

**Officials:** Greg Nixon, Amy Bonner, Chris Beaver

Game Time	ODU	Score	Diff	Temple
03:46				55 DEZONIE S assist (1)
03:27	0 ALLETTE V 2pt FG in the paint, driving layup made (22)	<b>71-61</b>	<b>10</b>	
03:19				3 MILLER H 3pt FG , jump shot missed
03:15	10 WILLIAMS T defensive rebound (6)			
02:54	0 ALLETTE V 2pt FG in the paint, layup made (24)	<b>73-61</b>	<b>12</b>	
02:43				34 PICARELLI M 3pt FG , jump shot missed
02:40	1 WADE J defensive rebound (8)			
02:18	0 ALLETTE V 3pt FG , jump shot missed			
02:13				3 MILLER H defensive rebound (4)
02:08				3 MILLER H 2pt FG in the paint, driving layup missed
02:05	10 WILLIAMS T defensive rebound (7)			
01:45	0 ALLETTE V 2pt FG in the paint, pull up jump shot missed			
01:43				33 HOFMAN S defensive rebound (9)
01:43	0 ALLETTE V foul personal (4 - 9)			33 HOFMAN S foul drawn (2)
01:43	Timeout media			
01:43				34 PICARELLI M substitution out
01:43				55 DEZONIE S substitution out
01:43				0 BERRY Q substitution in
01:43				4 RILEY J substitution in
01:43				33 HOFMAN S 1&1 free throw 1 missed
01:42	2 JENKINS C defensive rebound (7)			
01:27	2 JENKINS C 3pt FG , jump shot made (15)	<b>76-61</b>	<b>15</b>	
01:27	0 ALLETTE V assist (1)			
01:05				4 RILEY J 2pt FG in the paint, layup missed
01:02	10 WILLIAMS T defensive rebound (8)			
00:48	2 JENKINS C foul drawn (2)			4 RILEY J foul personal (2 - 7)
00:48	2 JENKINS C 1&1 free throw 1 made (16)	<b>77-61</b>	<b>16</b>	
00:48	2 JENKINS C 1&1 free throw 2 made (17)	<b>78-61</b>	<b>17</b>	
00:39		<b>78-63</b>	<b>15</b>	3 MILLER H 2pt FG in the paint, layup made (20)
00:10	10 WILLIAMS T 3pt FG , jump shot missed			
00:07				3 MILLER H defensive rebound (5)
<b>END OF GAME</b>				
<b>ODU 78-63 Temple</b>				



Officials: Greg Nixon, Amy Bonner, Chris Beaver

**Temple - 32**

NO.	Name	Min	FG			Rebounds			Fouls		TP	AS	TO	ST	Blocks		+/-
			M-A	M-A	M-A	OR	DR	TOT	PF	FD					BS	BA	
14	Steve Settle	F 15:06	0-1	0-1	0-0	0	1	1	0	0	0	0	1	1	0	-17	
33	Sam Hofman	F 20:00	3-6	3-5	0-1	2	5	7	1	2	9	0	1	0	0	-12	
2	Jahlil White	G 10:38	0-2	0-1	0-0	1	1	2	1	0	0	0	1	0	0	-6	
3	Hysier Miller	G 18:52	4-10	0-5	4-5	0	3	3	3	5	12	3	0	0	0	-12	
34	Matteo Picarelli	G 08:23	0-4	0-4	0-0	0	0	0	0	1	0	0	0	0	0	-11	
4	Jordan Riley	11:37	2-4	0-0	1-1	0	1	1	2	1	5	1	0	0	1	-1	
55	Shane Dezonie	12:55	2-5	2-3	0-0	2	0	2	0	0	6	1	1	0	0	1	
1	Zion Stanford	00:46	0-0	0-0	0-0	0	0	0	0	0	0	0	1	0	0	1	
0	Quante Berry	01:43	0-0	0-0	0-0	0	0	0	0	0	0	0	0	0	0	-3	
Team						1	1	2			0		0				
<b>Totals</b>			11-32	5-19	5-7	6	12	18	7	9	32	5	4	1	2	1	-12

Shooting By Period		
2 <sup>nd</sup> FG%	11-32	34.4%
3PT%	5-19	26.3%
FT%	5-7	71.4%
GM FG%	11-32	34.4%
3PT%	5-19	26.3%
FT%	5-7	71.4%

Dead Ball Rebounds: 0, 0

Technical Fouls: NONE

**Old Dominion - 44**

NO.	Name	Min	FG			Rebounds			Fouls		TP	AS	TO	ST	Blocks		+/-
			M-A	M-A	M-A	OR	DR	TOT	PF	FD					BS	BA	
11	Dani Pounds	F 03:48	0-0	0-0	0-0	0	0	0	2	0	0	0	0	0	0	4	
15	R.J. Blakney	F 14:12	3-4	0-1	1-2	0	1	1	0	2	7	0	0	0	0	10	
0	Vasean Allette	G 17:51	5-10	0-2	3-3	1	0	1	3	2	13	1	1	0	0	12	
2	Chaunce Jenkins	G 16:39	3-5	2-2	2-4	0	4	4	0	2	10	4	1	2	1	17	
10	Tyrone Williams	G 17:01	3-4	1-2	0-0	0	6	6	1	0	7	0	1	0	0	14	
1	Jason Wade	16:12	1-2	0-0	0-0	2	5	7	3	0	2	1	1	0	0	8	
3	Imo Essien	05:30	1-2	0-0	0-0	0	1	1	0	1	2	0	0	0	0	-5	
55	Bryce Baker	08:47	1-4	1-4	0-0	1	0	1	0	0	3	1	0	0	0	0	
Team						0	0	0			0		0				
<b>Totals</b>			17-31	4-11	6-9	4	17	21	9	7	44	7	4	2	1	2	12

Shooting By Period		
2 <sup>nd</sup> FG%	17-31	54.8%
3PT%	4-11	36.4%
FT%	6-9	66.7%
GM FG%	17-31	54.8%
3PT%	4-11	36.4%
FT%	6-9	66.7%

Dead Ball Rebounds: 1, 0

Technical Fouls: NONE

	Temple	ODU
<b>Biggest lead</b>	0 (1 <sup>st</sup> 20:00)	17 (2 <sup>nd</sup> 0:48)
<b>Best Scoring Run</b>	6 (2 <sup>nd</sup> 13:36)	9 (2 <sup>nd</sup> 0:48)
<b>Lead Changes</b>	0	
<b>Times Tied</b>	0	
<b>Time with Lead</b>	00:00	19:50

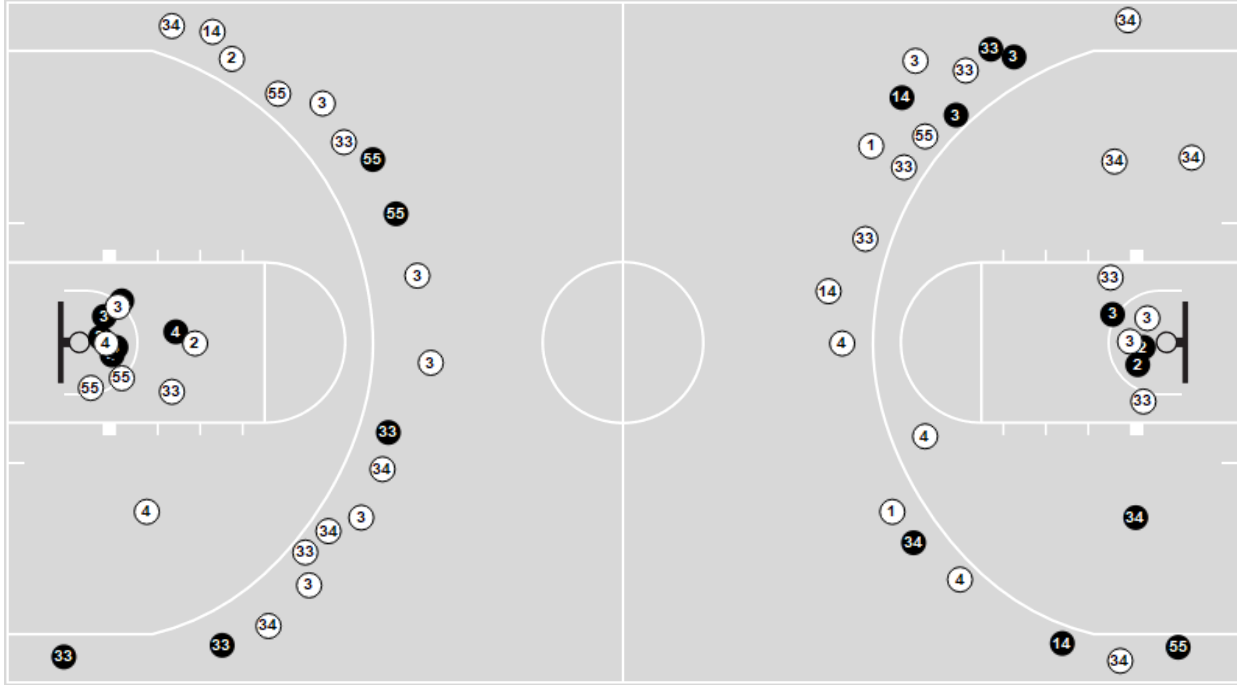
Points from	Temple	ODU
<b>Turnovers</b>	2	0
<b>Paint</b>	12	26
<b>Second Chance</b>	5	5
<b>Fast Breaks</b>	0	0
<b>Bench</b>	11	7

	Period by Period Scoring		
	1st	2nd	TOT
<b>Temple</b>	31	32	63
<b>ODU</b>	34	44	78

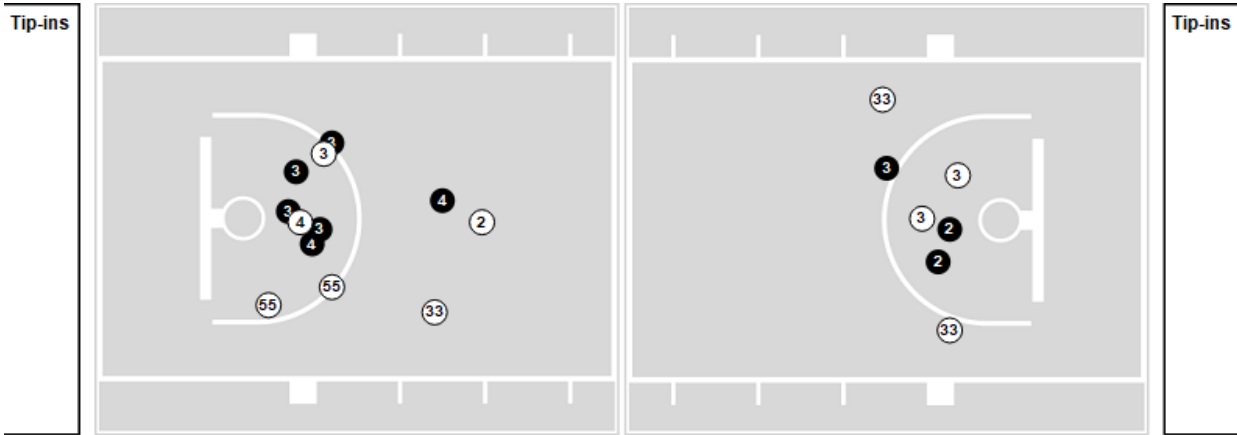


Players => All ; FG Types => All ; Results => All ;  
**Temple**

**All Field Goals**



**Shots in the Paint**



● Made    ○ Missed    N - Player Number

Temple	M/A	%
Field Goals	22/62	35
2 Points	10/24	42
3 Points	12/38	32
Free Throws	7/10	70

Temple	M/A	%
Points in the Paint	18 (9/19)	47
Fast Break Points	0 (0/2)	0
Second Chance Points	8 (4/9)	44
Effective FG%	45	

